

101+ Reasons to Move Forward to iFIX!

(Especially if you're a FIX user)

As our valued customer, you should be taking advantage of the best and latest technologies we have to offer. Proficy HMI/SCADA – iFIX* 4.5 is our most powerful iFIX application ever, with a wealth of new features and integration opportunities that can take your production operations to the next level of quality and efficiency.

If you're a member of our GlobalCare Complete Support program, an upgrade is simply a phone call away. If not, then GE Fanuc offers many programs that can allow you to quickly and easily migrate to our latest technology at a very affordable price. Simply put, if you haven't seen your system with iFIX 4.5, you haven't seen your system at its best. Here are 101+ great reasons to move forward...



101+ Reasons to Move Forward to iFIX!

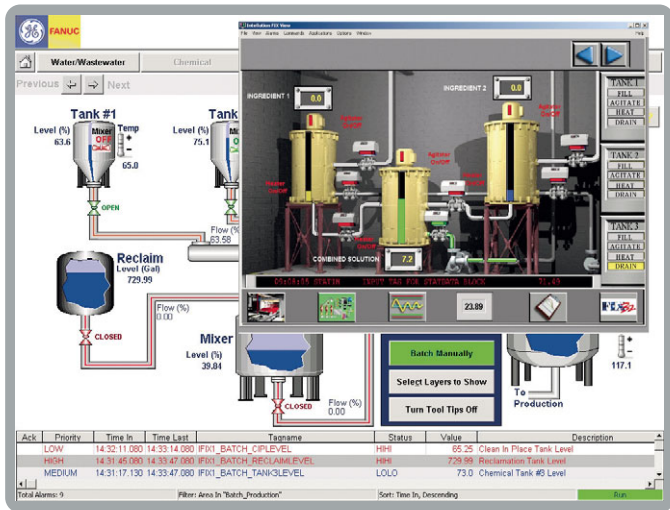
iFIX is better than ever – and continuing to improve.

- 1) In 1998, we introduced iFIX as the next generation of HMI/SCADA and the most logical path forward from FIX32. Today, iFIX is GE Fanuc's premier solution for Hybrid and Process applications. And it continues to be enhanced to meet tomorrow's market needs.

You get unmatched reliability

- 2) iFIX has been enhanced through over 10 releases, each one making it more powerful, more capable and more reliable.
- 3) In addition to its failover capabilities, iFIX is officially supported on Stratus Fault Tolerant computers, delivering the ultimate in hardware reliability. Each release of iFIX is tested on the latest Stratus hardware and is officially supported by GE Fanuc technical support.

iFIX is the Ideal Migration Path



- 4) iFIX is the logical next step from the earlier FIX technology. Along with the vastly new graphics package that it features, iFIX delivers powerful migration tools, which allow you to convert the majority of your existing applications. Driver configurations, the Process Database, Recipes, all migrate from FIX to iFIX.
- 5) In the area of graphics, iFIX leverages Microsoft Object Technology. Converters will migrate most of the functionality in your existing FIX displays. But in actuality, iFIX delivers so many new capabilities in the graphics area that most customers choose to improve their operator experience rather than just port existing functionality. If a port is all you need, then check out the next item!

Minimal Migration Effort

- 6) In 2004, GE Fanuc introduced the FIX Desktop for iFIX. The FIX graphics technology will live right along with iFIX graphics technology. Just as you can run Microsoft Word and Microsoft Excel at the same time on the same computer, you can run FIX Graphics (through the FIX Desktop) and iFIX Graphics (through the iFIX Workspace) at the same time. There is no need to migrate your graphics from one program to another. Just keep running your legacy FIX displays. And, since you can run FIX and iFIX graphics at the same time, you have the choice to create new displays for your new functionality and take your time with a migration. FIX Desktop will not disappear. You never need to migrate if that is your choice. FIX Desktop and the rest of your FIX application converts to iFIX and continues to move forward with new Microsoft Operating System releases.

Support for Windows 2003 Server and now a 1st on Windows Vista!!

- 7) FIX32 version 7.0 offers support for Windows versions up to Windows 2000 Workstation and Server. iFIX delivers support for all the latest Microsoft operating systems including Windows Vista.

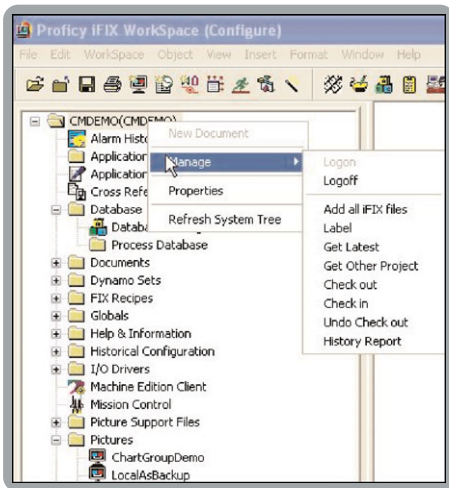
Leverage Remote Management

- 8) iFIX 4.5 now leverages Microsoft SMS (Systems Management Server) to remotely manage installations. Users can now remotely install SIMs, update Graphics and Stop/Start iFIX remotely using this technology. Microsoft also offers Terminal Services, the ideal technology for making Desktop applications like iFIX Clients available through "Thin Clients" and Web browsers. iFIX offers leading support for Terminal Services.
- 9) In addition, the FIX Desktop is fully supported with Microsoft Terminal Services.
- 10) If you need advanced Terminal Services capabilities, GE Fanuc supports the additional use of CITRIX, adding even more capabilities to Terminal Services, including improved session management, session monitoring, load balancing across multiple servers, and support for additional non-Microsoft thin client environments like Linux.
- 11) iFIX also delivers support for Terminal Services (up to 3 sessions) right from your SCADA node. Now you can deliver remote access to your iFIX SCADA node for remote users, remote diagnostics or Remote development, through dedicated thin clients or standard Web browsers.

Greatly Improved Trending

- 12) iFIX delivers a new paradigm in trending, combining both real-time trending and Historic trending through the same graphics object. This object delivers the ultimate in flexibility and exposes a myriad of properties and methods enabling you to do virtually anything you can imagine. Trend real-time data. Switch to History views, add pens, change view formats, overlay “Perfect Batch” trends, etc. The possibilities are endless.
- 13) The iFIX Trend Object delivers details of data through Tooltips. Pan, zoom and call up specific values at any point in time. Then, right click to display the source information and any additional variables you are interested in.

The New Graphics Paradigm – The iFIX Workspace



- 14) The Workspace is the access point for your entire application. The “System Tree” gives you visibility to all your application components. You can launch editors right from the tree. Just click on the application file – the rest is automatic. And now, iFIX Workspace automatically expands across multiple monitors and has enhanced Graphic positioning and Operation.
- 15) iFIX applications support “Projects.” All your application files grouped into a set of directories. Simply select the project you want to work on and iFIX will display all the application files in the System Tree.
- 16) The iFIX Graphics environment delivers the most powerful scripting possible – Microsoft VBA. And it is fully integrated in the workspace, not just an add-on as you find in many other HMI/SCADA products. It is fully embedded. The Workspace leverages it to deliver much of the functionality you take advantage of. And, best of all, it offers you the extensibility to create your own productivity tools, wizards, toolbars, etc. This makes iFIX the most powerful productivity environment for serious OEMs and System Integrators that want to invest in automating repetitive applications, making them more productive in targeting vertical markets and niche applications. This level of integration is only available from GE Fanuc.
- 17) The Paradigm of Microsoft Object Technology delivers with it ultimate in flexibility, and the ability to embed third party technology in the form of ActiveX Controls. Third party components bring the possibility of reduced reliability. iFIX helps alleviate this through the development of Secure Containment technology, the ability to wrap ActiveX components with a higher level of error detection and environment protection than available in other containers. A misbehaving ActiveX component simply gets shut off, rather than compromising the entire HMI container. ***This technology is only available from GE Fanuc.***
- 18) Object Technology is pervasive in the iFIX workspace. Lines, circles, squares and other shapes are all objects. All their attributes – location, color, style, etc. are available for control through a script or via HMI/SCADA data. But that is just the beginning. Displays and trends are also objects. iFIX itself exposes a great deal of internal functionality enabling automated application development. The capabilities are limitless. We have some customers that automatically build an entire application, databases, screens, etc. at the push of a button or the sensing of a new field device.
- 19) Don't let all this power lead you to believe iFIX is complex. Just the opposite is true! iFIX offers the ability to configure complex tasks through a series of easy to use “Animation Wizards”. They take all the guesswork out of application development. And, they act as teaching tools. Behind the scene, they are actually doing all the VBA work for you. If you choose, you can get specific insight into what was just done for you. iFIX can be fully configured for most applications without ever getting into the powerful technology that is embedded within the system.
- 20) iFIX Trend Objects are far more powerful than the trending in FIX. And, they offer a whole new dimension of configurability. By combining real-time trending and historic trending into the same object, applications can offer new capabilities in analyzing data through a single interface.
- 21) iFIX delivers an OPC Alarm and Event viewer. OPC A&E is the standard in interfacing alarm and event messaging from disparate systems. The iFIX A&E Viewer Object can view alarms from iFIX and from other OPC A&E data sources. It is a standard user configurable object that also delivers a great number of properties and methods for VBA customization.
- 22) iFIX graphics offer “Direct OPC Access”, the ability to link directly to local or remote variables through OPC-DA, in addition to linking to local and remote iFIX Process Database Tags. This enables the user to display diagnostic data directly from data sources without burdening the rest of the application with numerous database tags that are rarely used.

101+ Reasons to Move Forward to iFIX!

23) VisiconX Relational Database Objects, now with millisecond support, are the ideal way to view, insert and update information from relational databases. This set of objects provide the ability to link to a database, run standard or variable queries, and display the results in grids, without the need for programming. The objects are extremely configurable. In addition, as with most other iFIX Objects, they expose a wide variety of properties and methods for further customization. VisiconX technology is unique to GE Fanuc products, delivering connectivity beyond other solutions generally available. ***This technology is only available from GE Fanuc.***



24) 3D Effects (gradient fills and pipes) are combined with new Drawing tools to enable iFIX to deliver stunning process diagrams, complete with color animation and the ability to update and re-arrange. The iFIX Graphics experience has gotten better with iFIX 4.5 supporting 24 bit Graphics.

25) Connection points define where lines or pipes connect to motors, valves, etc. You place the connection points and as you use the objects, lines simply snap to the connections. As you move objects, lines and pipes stay connected and update their positions automatically, even during animations. Connection points deliver a whole new dimension to HMI/SCADA animation and dramatically ease development. ***This technology is only available from GE Fanuc.***

26) Additional Line Tools improve your productivity in developing graphics. Draw lines. Extend them to connect, truncate extra, convert segments to poly-lines and convert poly-lines to pipes. The tools are all there in iFIX.

27) iFIX delivers new Shapes – Arc, Cord, Wedge, complete with extreme flexibility in animation. Create dynamic Pie Charts for quality vs. scrap or utility use throughout the plant. The tools are all there for visibility and understanding of your process as never before.

28) iFIX offered the ability to embed a Bitmap Graphic. iFIX delivers the support for these image types... JPG, Bitmaps, MS Paint, Windows Metafiles, PCX, Windows Icons, Windows Cursors, Photoshop PSDs, and Postscript Raster formats. And – through the use of Third party ActiveX controls, you can embed virtually anything from Animated GIFs to AutoCAD and PDF files.

29) iFIX gives you the ability to integrate your own application oriented help system. All the capabilities of iFIX context sensitive help are available at the application developer level. Want to associate a help file or procedure file with the graphic of a complex piece of equipment? No problem, it's a click away.

30) Tooltips also deliver an added level of clarity and iFIX enables you to deliver a ToolTip with every graphic object.

31) When it's time to document your applications, iFIX graphics can be exported to a standard SVG format. This is also the mechanism iFIX uses to provide difference reporting from one screen version to the next. Want to know the differences between two versions? Run a difference report or have our Change management product do it for you... Read on and you will learn what Change Management is all about.

32) While iFIX gave you 256 colors to work with, iFIX delivers unlimited color support and now supports 24 bit Graphics.

33) As screens become more complex, they become more processor intensive. iFIX delivers patented technology called "Screen Regions", where operator displays are automatically managed as a grid of 30 regions. Areas are independently managed and updated to avoid full screen updates with every animation. This is especially beneficial when combining iFIX graphics with technology such as Microsoft Terminal Services. ***This technology is only available from GE Fanuc.***

34) Up to 30 Screen Layers enable you to develop your graphics with progressive detail, text overlays, product flows, etc. Layers are designed with performance in mind. If a layer isn't shown, it isn't processed. At runtime, you have complete control over what is and is not displayed, all while delivering the highest level of performance.

35) Scheduling is an important aspect of any HMI/SCADA system. iFIX delivers a powerful background scheduler delivering complete control based on any combination of time or events.

36) The productivity of your graphics developer is greatly enhanced within iFIX. A wide array of productivity tools enable the powerful duplication of object, alignment controls, etc. all from keyboard and mouse shortcuts. These "Hidden Treasures" are a goldmine for productivity over other solutions.

iFIX Delivers and Extends the Capabilities of the Most Relevant Standards Applied in the Automation Industry.



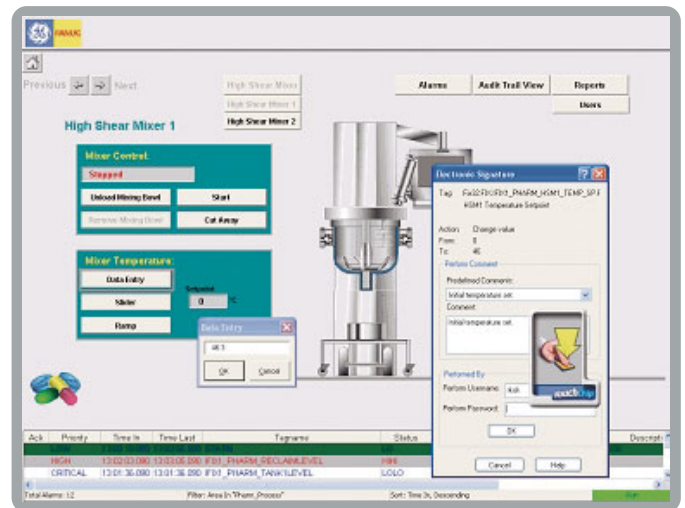
- 37) ODBC (Open Database Connectivity) - while both FIX and iFIX support ODBC queries to the Process Database, iFIX extends that with alarm and event logging to relational databases via ODBC. Once in a relational database, other iFIX tools, such as VisiconX, make quick work of special queries and detailed analysis.
- 38) VBA is the most pervasive and powerful scripting environment on the market today. It offers the broadest user base of expertise to draw from. It delivers the most productivity tools, samples and forums of any scripting language. VBA is completely integrated with the iFIX Workspace and Graphics environment enabling iFIX to be the most flexible and customizable GUI solution available today.
- 39) Object technology, in the form of ActiveX Controls, are an ideal solution to extending an HMI/SCADA GUI. iFIX delivers very powerful ActiveX capability, enhanced with a special Animation Wizard for driving the properties of ActiveX controls without the need for any scripting. iFIX, even with it's advanced Microsoft VBA, delivers both Power and Ease of Use. You only need to utilize the VBA function if you have advanced requirements.
- 40) **Compliance testing for OPC DA and OPC AE completed successfully!!** OPC is a connectivity standard for the automation marketplace. iFIX extends the basic OPC-DA capabilities of FIX with direct OPC-DA connectivity to graphics, an OPCAE server and an OPC-AE viewer object.

iFIX Delivers Additional Tools to Enhance Operator Productivity Without the Need for Additional Application Development.

- 41) Quick Trends deliver the ability to right click on any selectable object and immediately trend its source information.
- 42) Dynamic Language Switching enables the user to switch the text used in a graphic from one language to another at runtime. This is especially useful when operators change during shifts or when an OEM delivers a standard product across many countries.

Improved Security has been a Major Focus of iFIX.

- 43) iFIX performs Windows Security Authentication and managed iFIX security through Windows. This enables an IT Manager to completely manage security groups and users through Microsoft Windows Tools. Leverage Windows Security for Strong Passwords or Password Aging. The Security Synchronizer makes it easy to set up.



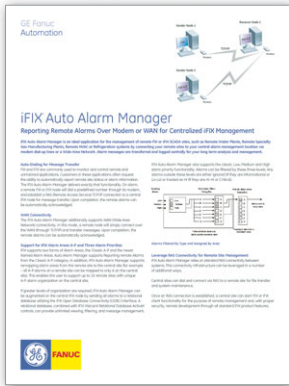
- 44) The integrity of your application is extremely important. iFIX delivers the Application Validator, a tool that will scan all specified files and directories, create a database of current states, based on time or event, run a compare, log and signal any differences. Any detected changes can be logged, trigger an alarm or an operator notification.
- 45) iFIX delivers industry leading Audit Trail capabilities and specifically addresses the special requirements of the 21 CFR Part 11 rules for managing electronic signatures in an automation system.



- 46) Biometric support enables the user to use a thumb print, retina scan, etc. in place of a password. iFIX delivers Biometric support along with its regulated industry 21 CFR Part 11 functionality.
- 47) While FIX offered good network security, iFIX takes it to the next level by adding industry recognized 128 Bit encryption between Clients and Servers.
- 48) Trusted Computing is the ability to define a password to be used in a Client Server environment. If a computer doesn't have the required authorization, it is blocked from communications with others.

101+ Reasons to Move Forward to iFIX!

iFIX delivers improved Alarm Management.



- 49) Where FIX was limited to alarm areas A-P, iFIX delivers User Named Areas – over 200 of them.
- 50) iFIX delivers additional Alarm Priorities (Informational, Lo-Lo, Hi-Hi and Critical) are added to the FIX Low, Medium and High.
- 51) All messages can be logged to a relational database through the use of ODBC, giving you unlimited analysis capability through iFIX tools such as VisiconX or standard database reporting tools like Crystal Reports.

iFIX delivers integration with GE Fanuc's World Class S-88 Batch Automation Product.

- 52) This is accomplished through iFIX database connectivity and special ActiveX Batch controls that are used in iFIX Graphic displays.

Improved Developer Tools enable iFIX Developers to be Even More Productive.

- 53) Graphic Dynamo Management gives Users the ability to retain connections of used Dynamos with the Dynamo library so they can reflect any updates made in the Library.
- 54) A comprehensive Backup and Restore wizard neatly archives your entire application or selected components of it. A restore can be in its entirety, by type of file (pictures, for example) or file by file.
- 55) Managing remote access via Terminal Services is easily accomplished with the iFIX Profile Manager. The Profile Manager lets you set up a list of users and the applications they are able to launch in a Terminal Services session.
- 56) iFIX delivers Project Management, the ability to define separate directories for your different applications and select which project to launch, a selection in the System Configuration utility.
- 57) The Cross Reference Tool finds and manage tags throughout your application. Discovery and Automated Configuration is a key component to improving developer productivity. iFIX delivers the ability to browse remote

lists of tags, from program files or from OPC Servers, then automatically configure a driver and the iFIX Process Database. This is more than a startup wizard – the Discovery and Auto-Configuration tool remembers what you did last time and will show you what's new with each use. You can incrementally make enhancements to your application, discover new tags from your PLC, select the ones you want to use and automatically configure iFIX. No spelling mistakes. It's all just point and click.

- 58) The Process Database Import and Export functionality has been significantly enhanced. For example, Database Imports are up to 10X faster than with FIX.
- 59) Regulated industries and applications requiring detailed operator audit trails benefit greatly from the Electronic Signature capabilities of iFIX. iFIX meets all the runtime requirements to address the 21 CFR Part 11 regulations for operator authentication and audit trail documentation.

Integration with Change Management.

EASIER APPLICATION MANAGEMENT, CLEANER INSTALLATIONS !!



- 60) Version 4.5 of iFIX now delivers a more advance integration with Proficy Change Management. When using the GE Fanuc Proficy Change Management server, customers can pinpoint differences in various copies of Databases (PDB files), Scripting differences in Pictures and User.fxg(Global Scripts) and Graphic Dynamos/Dynamo Scripting. All iFIX application files can be under version control. You will know who changed what and why. ***This technology is only available from GE Fanuc.***
- 61) This includes extensive reporting on files (version differences). Get a report on the graphics objects that have changed. Or run a report on changes in the Process Database.
- 62) One of the greatest benefits of Change Management is its ability to deliver on disaster recovery. Change Management ensures you have the latest version of every application file and have instant access to it in the event of an equipment failure or other application disaster.

Native Integration with a World Class Historian.



- 63) Proficy Historian is an extremely powerful and well-recognized solution for long term data archiving and retrieval, and iFIX integrates tightly with it. Historian is extremely scalable and can reside on the same node as iFIX. Historian also delivers remote "Collectors" enabling the Historian to be centralized to your business while still collecting data from many remote locations in a high performance and reliable manner.
- 64) Historian delivers special tools for migrating past iFIX and iFIX "Classic" data. Then, with one click of the mouse, iFIX is told to switch its history connectivity from Classic Mode to Historian mode; it's that simple. From then on, iFIX uses Historian as easily as it did the earlier Classic logger.
- 65) Historian delivers the ability to perform sophisticated reporting through the use of an Excel Add-in. This tool lets you retrieve both data and Alarm and Event information. The tool will take its query specifications as values entered by the user, or as fields in the spreadsheet.
- 66) iFIX has direct access to data in Historian from its trends. In addition, Historian supports OLE-DB connectivity to any OLE-DB clients. iFIX VisiconX database tools deliver another powerful way to perform ad-hoc queries against Historian information.
- 67) In the past with iFIX and with iFIX, Classic Historian administration required you to manage lots of data files, backing them up, and pulling them out when needed again. Historian delivers the lowest possible administration of any Historian on the market. In addition, administration can be performed remotely from your SCADA node through the use of a Web based Admin interface.
- 68) While Classic Historian was great at logging iFIX or iFIX data, Historian offers connectivity to a much wider set of products from OPC Servers to Lab Data files. Your use with Historian and iFIX will greatly enhance your ability to access data.
- 69) The performance of Historian over Classic Logging is dramatic. Not only can Historian log data faster (in excess of 20,000 tags per second on a sustained basis), but Historian offers extremely fast retrieval rates.
- 70) Historian also delivers on enhanced security. With support for Regulated Industries, delivering 21 CFR Part 11 capabilities, and powerful Admin Tool security, you can be sure your data is safe, tamper resistant and that you will have audit trails of any change.

The Container Technology in iFIX delivers the Industry's Most Robust Environment for Hosting.

- 71) Hosting, as described earlier in the graphics section, can simply be the containing of a graphics object or ActiveX control.
- 72) But hosting can also take on a whole new meaning. iFIX delivers the ability to reliably host Web Browsers and Remote Terminal Services or Remote Desktop sessions. This delivers all new capabilities of delivering reliable access to remote systems to your operators. Have them reliably access email from a remote computer through the technology of Remote Desktop. The email never opens on the local computer; it's only viewed there and your automation system is never at risk from an email virus. There are many other uses for "Hosted" connectivity and iFIX delivers it with the highest possible level of integration and reliability.

Users have Requirements to Access Data from Other Systems, Especially at the Corporate Level.

- 73) In addition, information must often come from disparate sources and must be viewed as a whole to make informed decisions. The Proficy Real Time Information Portal is just the technology for this job. It is a Web-Based technology, enabling the querying and viewing of data from a wide variety of sources. iFIX delivers Portal Integration at a number of levels...
- 74) iFIX information is available to Portal in real-time. A Portal display can update dynamically based on iFIX tags.
- 75) iFIX Alarm and Event information is available in Portal.
- 76) iFIX History information is available in Portal, through the use of Historian.
- 77) iFIX can Host Portal Displays as a component inside an iFIX Display. Calling up a display in iFIX can automatically log in to Portal and display a Portal screen with the same connectivity and interaction users achieve with Portal directly.
- 78) While Terminal Services delivers the ultimate HMI interface experience in iFIX, users often have the need for a high level overview, presented graphically. Portal delivers a powerful utility called Jumpstart. This tool converts your iFIX picture into a Portal picture, converting your graphic drawing objects into the equivalent Portal drawing. Data and animations largely convert as well. After the JumpStart, just use the standard set of Portal Graphics tools for any additional changes.

101+ Reasons to Move Forward to iFIX!

Web Browser Containment.

- 79) iFIX is the ideal container for browsing the Web. The features of VBA and enhanced reliability through Secure Containment enable browser hosting with higher reliability than ever before. So, what can you do?
- 80) Host access to PDF Files to have online documentation.
- 81) Host access to Support Services. Give your plant supervisors and engineers access to GE Fanuc's award winning GlobalCare services.
- 82) Offer access to your own internal systems, Intranets, maintenance systems, etc
- 83) Machine Edition Hosting – While Hosting is a valuable way to deliver visibility to higher level business systems, it's also a powerful way to gain access to lower machine control applications. GE Fanuc offers powerful HMI solutions in the form of products called Machine Edition and QuickPanels. These products deliver Web access and iFIX can host (Embed) remote HMI displays right into an iFIX display through the simple use of a Browser Control.

iFIX is on the Move – More Great Features are Coming!

- 84) Your automation systems are critical to your success and you shouldn't settle for second best. With over 10 releases already, iFIX is arguably the most feature rich and reliable solution on the market today. And there is much more coming...
- 85) Improved Redundancy – iFIX installations would be sturdier with new improvements to its already strong Redundancy configuration. Database and Alarm Synchronization would enable users to configure Hot Backup functionality which no other product delivers.
- 86) State-of-the-Art Trending – iFIX would bring in a totally revamped look at Trending. Users would be able to utilize the new Trending functionality to configure a variety of different Chart types and view data in various combinations.
- 87) Easier Deployment and Distribution – Newer versions of iFIX would deliver the ability to deploy applications over a large install base with relative ease.

- 88) Target Market Productivity Packs – A completely new and powerful set of tools would be available for key Vertical Markets like Water/Wastewater, Power etc. The tools will range from application templates, dynamos, database blocks and reporting tools.
- 89) Standard Reporting Tools – Soon iFIX users would be able to configure Standard Reports as easily as they configure iFIX Graphics. This would give them the ability to generate On Demand Reports and Regular Production Reports in no time.
- 90) Proficy Platform Integration – GE continues its promise of delivering a Total Plant Solution by integrating iFIX with Proficy Platform its latest in next generation tools providing improved Data Management.
- 91) Support for Microsoft LongHorn – iFIX continues its commitment to support the latest market technologies with support to Microsoft Longhorn.
- 92) 64-bit Application – The new iFIX would be more efficient in performance with a true 64 bit architecture.

iFIX is a Key Foundational Component of the New Proficy Platform.



- 93) GE Fanuc is making significant investments in its next generation of tools, delivering improved data access and analysis. This begins with a tool called the Proficy Platform. The Proficy Platform is a scalable technology, delivering new levels of data access, and data control. The Proficy Platform can be applied on a on a single node, or across your whole enterprise.
- 94) The Proficy Platform delivers data organization to the thousands of tags that make up your applications. Organization starts via the S95 standard Equipment Model.

- 95) The Proficy Platform offers connectivity to a variety of data sources. It is intended as the one point of access to any information in your automation process, from OPC Servers to iFIX, Historian and even third party products. If you need a piece of information, you'll be going to the Proficy Platform for it.
- 96) The Proficy Platform delivers the ability to control access to data. You decide who gets to see what. And who gets to change what. When a plant manager logs in, only the key variables a he needs to see will appear. On the other hand, a plant engineer may have access to much more. Some users will have read-only privileges while others will have full read-write access.
- 97) All access is managed through a role and user based security model. Security is managed by your Windows environment. Windows enforces the security rules for password lengths, password expirations, and strong password selection.
- 98) The Proficy Platform is the foundation for a whole new set of solutions from GE Fanuc. From applications for report generation to applications delivering workflow management., the Proficy Platform is your ideal gateway to any information in your iFIX, Historian or other automation component.

GE Fanuc Delivers Continuous Value to its HMI/SCADA customers...

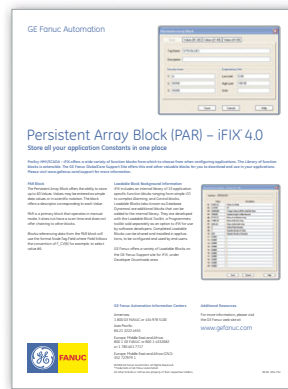
- 99) The foundations for iFIX were first introduced more than 20 years ago as a revolutionary HMI/SCADA application to meet the needs a wide range of industries. GE Fanuc continues to invest heavily in the solution. Today, iFIX continues to be one of the most feature rich products on the market.
- 100) GE Fanuc is the first vendor to implement an independent program to ensure continued value to HMI/SCADA users, called the Productivity Pack program. Through Productivity Packs, GE Fanuc delivers enhancements and add-ons to our HMI/SCADA products independent of an iFIX release. These are all available to GlobalCare Complete Support customers for no additional charge as part of their contract.

Take Advantage of Productivity Packs with iFIX

- 101) OPC Alarm and Event Express – iFIX features a free email notification tool based on the OPC Alarm and Event specification. It is an OPC-A&E Client, able to talk with the OPC A&E Server in iFIX and then deliver email messages to select users at select times.
- 102) Specter Instruments WIN-911 has been specifically tested with iFIX. In addition, Specter Instruments has developed an iFIX ActiveX Control, enabling WIN-911 to be fully controlled from within an iFIX operator display. This level of integration between Specter Instruments and GE Fanuc isn't available with any other product.

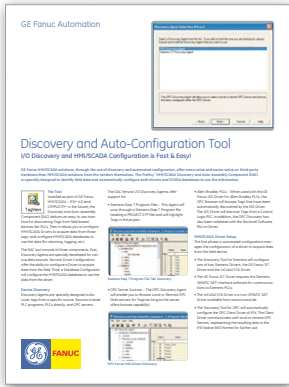


- 103) New Loadable Blocks are available from the GE Fanuc GlobalCare Website. Many are already posted for our users. New ones are available for iFIX and are delivered through Productivity Packs. The latest is called the PAR block – a Persistent Array Block, able to centralize and organize all the setpoints or constants you need in an application.



101+ Reasons to Move Forward to iFIX!

- 104) iFIX Database Import Speed has been improved exponentially over FIX. This enhancement was first delivered as a Productivity Pack and later added to the product.
- 105) The Discovery and Automated-Configuration tool was enhanced for OPC Discovery. This was first delivered as a Productivity Pack and later added to the Product.



- 106) Need a Thumbprint reader? Iris Scanner? Want to use Biometrics to handle Password entry? This capability is available for iFIX and is available as a Productivity Pack.

GE Fanuc Delivers Leading Support Capabilities.

- 107) GE Fanuc delivers tools to make you more efficient. From Web based case management to leading diagnostic tools such as our Black Box, GE Fanuc ensures you have access to the information and technology you need to commission or troubleshoot your system.

iFIX is from GE Fanuc

108) Last but certainly not least, iFIX is from GE Fanuc, a successful 20+ year joint venture between two industry leaders, FANUC of Japan and GE. While other companies and products come and go, your automation investments with GE Fanuc are secure, and your solutions are part of a living set of Proficy products that are being incrementally enhanced while leveraging additional layered products delivering new capabilities. GE Fanuc prides itself in having assembled the best in sales, support, and in extended resources – supporting your automation success and your long term ability to achieve continuous improvements through reduced costs, improved quality, increased performance and new levels of agility.

For more information, contact your local GE Fanuc representative. They can add a whole new dimension of reasons, based on your local user community, their local services and support capabilities, and local partners that can be leveraged for your success.

GE Fanuc Automation Information Centers

Americas:
1 800 GE FANUC or 434 978 5100

Asia Pacific:
86 21 3222 4555

Europe, Middle East and Africa:
800 1 GE FANUC or 800 1 4332682
or 1 780 401 7717

Europe, Middle East and Africa (CNC):
352 727979 1

Additional Resources

For more information, please visit the GE Fanuc web site at:

www.gefanuc.com

