

SRM-2: SERVER REDUNDANCY WITH AUTOMATIC FAILOVER FOR PROFICIY iFIX

SRM-2 Provides:

- Reliability**
- Server redundancy**
- Automatic fail-over**
- Dual-server configurations**
- Redundancy with serial communications**

SRM-2 provides the reliability of two iFIX SCADA servers in a redundant configuration with automatic fail-over. SRM-2 is required when your iFIX system includes processes that cannot run simultaneously on both servers. Here are some examples:

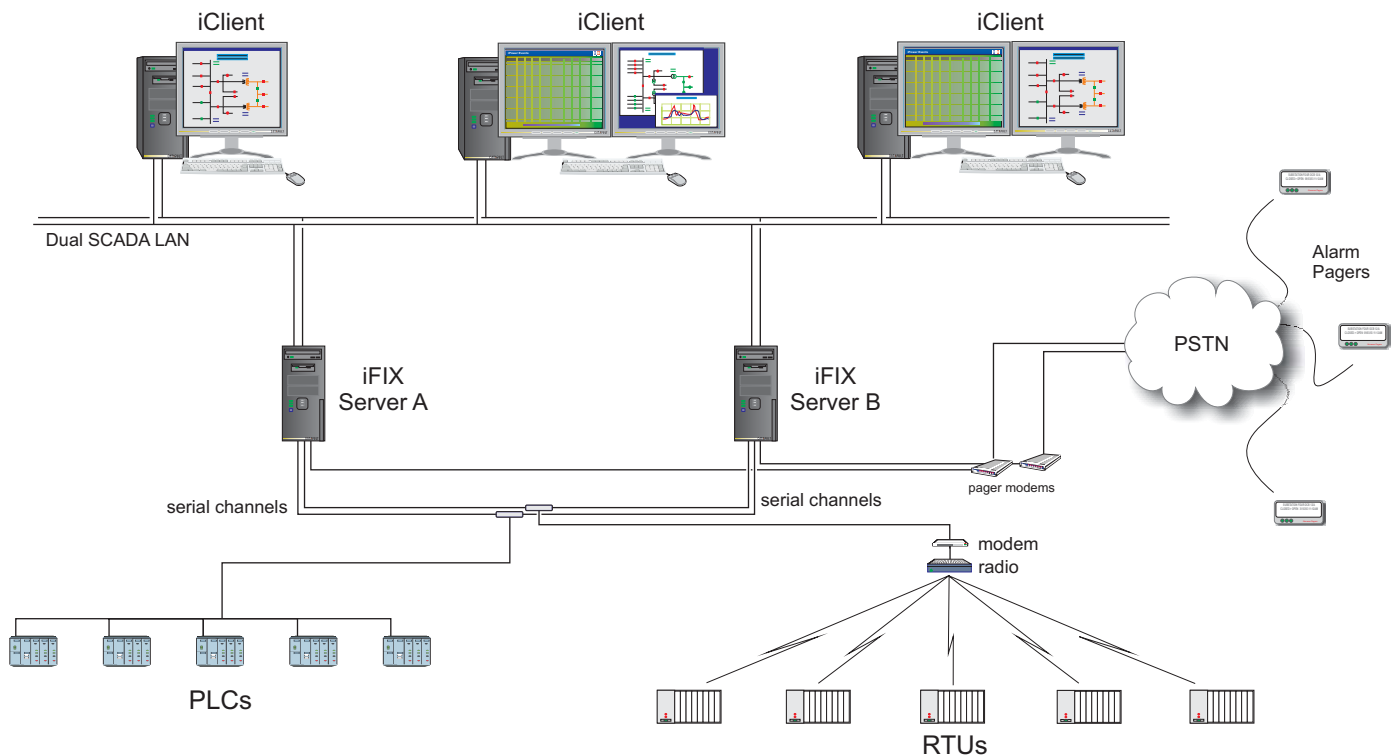
Telemetry applications may only have a single communications path to RTUs or PLCs. Communications software drivers running simultaneously on dual servers compete on the single communications path, preventing successful operation.

iFIX schedules need to run on just one server in a redundant pair to avoid duplicated actions.

Third party applications like Win911 pager or OnDemand create conflict by trying to run simultaneously on two servers.

... SRM-2 solves these problems

Typical redundant server iFIX configuration:



Additional Benefits of SRM-2

Automation Interface

SRM-2 provides an (OLE) automation interface. This allows SRM-2 to be controlled from within the iFIX Workspace environment using Visual Basic for Applications (VBA).

Fail-over Notification

iFIX alarms notify operators of fail-over incidents.

On-line Help

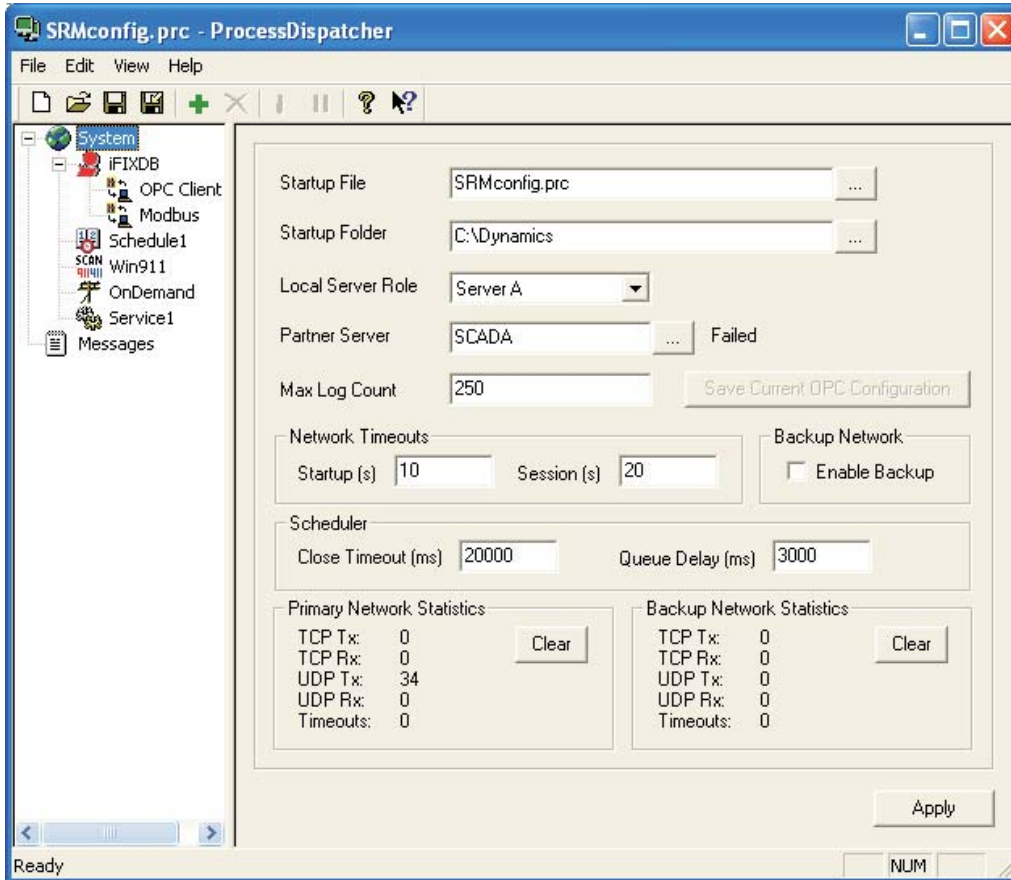
SRM-2 includes context sensitive on-line help.

Fail-over Recording

In an iPower system, or a system with Catapult 'ALARMS&EVENTS' product installed, the migration of process between servers is recorded in the Events list.

How Does SRM-2 Work?

SRM-2 ensures that communications drivers and critical processes run only on the preferred server, avoiding conflicts with processes running in two places at once. **SRM-2** monitors the servers over single or dual LAN connections. Failure of a server triggers **SRM-2** to automatically start the missing communications drivers and processes on the remaining server. iFIX alarms will alert users to the fail-over.



SRM-2 configuration display

Technical specifications

General Specifications

- Supports single or dual LAN
- Nominated primary and standby servers
- Configurable heart beat period
- Configurable failure delay period
- Automatic synchronization of fail-over configuration settings
- Manual fail-over of an individual process
- Manual fail-over of a complete server
- OLE automation interface for control of **SRM-2** within the iFIX workspace using VBA.
- Windows NT4, 2000, XP, 2003
- Supports iFIX 2.6 or later
- Supports iPower 2.20, 2.30, 2.40, 2.50 or later

Process Related Specifications

- Fail-over management of an unlimited number of processes
- Independent configuration per process
- Process types supported:
 - iFIX database reload
 - iFIX v7 communications driver
 - Schedule
 - Custom tasks
 - Windows service
 - ONDEMAND**

Process Related Specifications continued...

- Process specific parameters:
 - Preferred server
 - Automatic control enable/disable

About **SRM-2** delivers additional services to GE Fanuc's Proficy iFIX. **SRM-2** can be added to a new or existing iFIX system

Catapult Products for Proficy iFIX



EVENTS Event history, sequence of events plus other event and alarm enhancements

IPOWER SCADA Complete SCADA solution for the electric industry

MENU Navigation for iFIX, with a familiar look and feel

ONDEMAND Demand-side load curtailment for electric power

CONTROL-SAFE Safe environment for operator control

PAN&ZOOM Pan, zoom and automatic clutter/declutter

SRM-2 Dual server redundancy + automatic failover

www.catapultsoftware.com