



Proficy* Change Management and Proficy HMI/SCADA – CIMPLICITY*

CIMPLICITY and Proficy Change Management together provide a powerful way to manage your GE Fanuc Intelligent Platforms HMI/SCADA applications and ensure you never experience lost files or the inability to recover from a disaster again.

- Have you ever wished you had an Undo button for your HMI/SCADA project?
- Do you need an audit trail for changes made to your system?
- Do you want to increase the security of your development environment?

If so, adding Proficy Change Management to your CIMPLICITY system is a natural choice.

Proficy Change Management provides the functionality to manage and maintain programs and projects in a manufacturing environment to improve plant uptime, enforce good engineering practice and reduce risk. Using version control, security, audit trailing, and scheduled verifications, you can get a handle on what's happening in your plant.

Proficy Change Management is designed to be an open and flexible interface with a variety of software and hardware products from various vendors including GE Fanuc, Rockwell, Siemens, and Schneider, providing you with a complete automation change management solution.

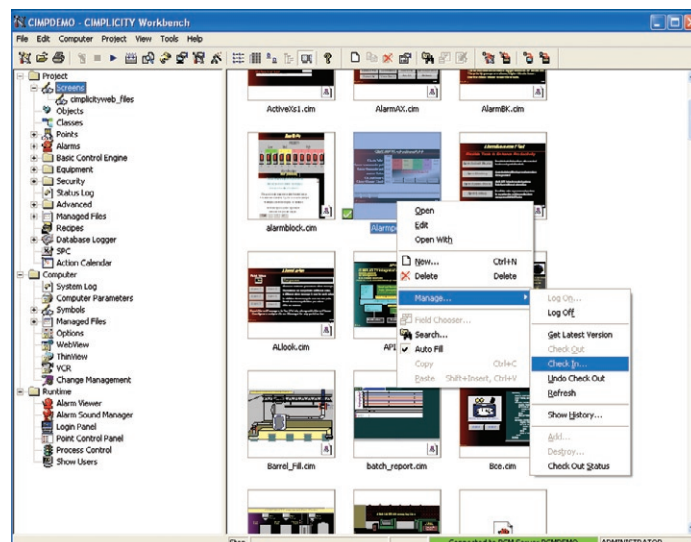
Manage Your CIMPLICITY Projects

Proficy Change Management ensures that all your nodes are using the most current version of a CIMPLICITY application and uses a check out/check in process, whereby only one person can

modify a screen, the point database or other files at a given time. The system maintains a version history, so if undesired changes are made, you can recover a previous version with the click of a button.

All this happens from your CIMPLICITY Workbench. The Workbench tree has been enhanced to provide a logical order of access to all components of your applications. Change Management is available at the project and component level to manage your point database, screens, configuration and more.

Proficy Change Management allows you to easily manage your projects in a multi-user development environment. Multiple users can access different parts of the same application during development, while ensuring people don't overwrite each other's work.



Proficy* Change Management and Proficy HMI/SCADA – CIMPLICITY*

System Requirements

Proficy HMI/SCADA – CIMPLICITY Version 7.0 or later

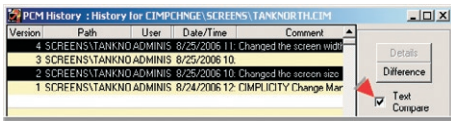
Proficy Change Management Server and Scheduler

Track changes and revisions

Proficy Change Management provides a version control system that maintains a history of changes at both the project and component level. As changes are made to components, and checked in, new versions are automatically created. This version history provides traceability, tracking who made changes and when, as well as the ability to revert back to previous versions if needed, ensuring that you can recover from inadvertent or incorrect changes quickly and easily.

The system maintains the concept of a master version on the server – the version of the files that should be running on the master node. Using the difference function, you can compare the node files to the master files and determine if there are any changes. You can also compare any two versions of the files to determine what changes were between them.

Details of differences are provided in a text format so you can see what has been added, modified, or deleted.



Detailed Audit Trails

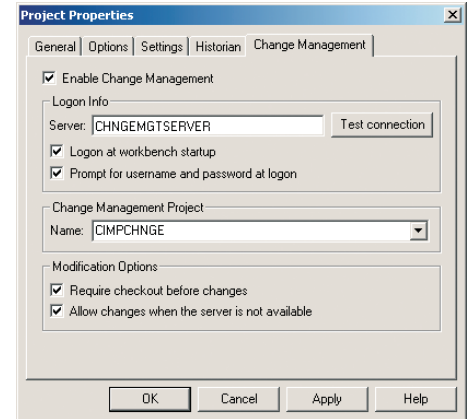
The Proficy Change Management system records each time a project is accessed in a central audit trail. The system tracks which users are modifying what components within your CIMPLICITY project.

Event Date	User	Computer Name	Component	Project	Event	Event Description
28-Sep-2006 01:26 PM	Administrator	PCMD8MO	FX Ace		Access Control Event	Access Control has been checked out.
28-Sep-2006 01:26 PM	Administrator	PCMD8MO	FX Ace		Group/User Change	Assigned user Bob to group Administrators.
28-Sep-2006 01:26 PM	Administrator	PCMD8MO	FX Ace		Access Control Event	Access Control has been checked in.
28-Sep-2006 01:26 PM	Bob	PCMD8MO	FX Mgr		Logout	Bob logged out.
28-Sep-2006 01:26 PM	Bob	PCMD8MO	FX Mgr		Login	Bob logged in.
28-Sep-2006 01:26 PM	Bob	PCMD8MO	FX Mgr	GEF_TEST	Project Check Out	Check out of [screens\sr1.cim]
28-Sep-2006 01:26 PM	Bob	PCMD8MO	FX Mgr	GEF_TEST	Project Check In	Check in of [screens\sr1.cim]

It records the date, time, user, computer location and project, along with any comments supplied by the user. This provides you with the ultimate in traceability on changes for your application.

Security

Proficy Change Management works with your CIMPLICITY security. Only those users with the appropriate permissions can access the files being managed by the Proficy Change Management system.



Scheduled Backup and Compare

The Proficy Change Management scheduler allows you to confirm that the CIMPLICITY application running on a node matches the master version on the server on a scheduled basis, ensuring that unauthorized changes are detected. With a backup of your running systems, you can recover from errors or system failures quickly and easily.

About GE Fanuc Intelligent Platforms

GE Fanuc Intelligent Platforms, a joint venture between General Electric (NYSE: GE) and FANUC LTD of Japan, is a high-performance technology company and a global provider of hardware, software, services, expertise and experience in automation and embedded computing, with products employed in virtually every industry, including manufacturing automation, defense, automotive, telecommunications, healthcare and aerospace. GE Fanuc Intelligent Platforms is a worldwide company headquartered in Charlottesville, VA, and is part of GE Enterprise Solutions. For more information, visit www.gefanuc.com

GE Fanuc Intelligent Platforms Information Centers

Americas:
1 800 GE FANUC or 434 978 5100

Asia Pacific:
86 21 3222 4555

Europe, Middle East and Africa:
800 1 GE FANUC or 800 1 4332682
or 1 780 401 7717

Europe, Middle East and Africa (CNC):
352 727979 1

Additional Resources

For more information, please visit the GE Fanuc Intelligent Platforms web site at:

www.gefanuc.com

