

*"We chose PROFICY's Tracker because installation of the solution at our Smyrna, Tenn., plant, achieved better inventory management, broader quality control, and faster lead times and inventory turns.*

*"It is a major contributor to making the plant the most productive car plant in North America, and we're passing those benefits on to our new facility."*

Mike Head  
Department Manager for Plastics and Systems Engineering  
Nissan North America

# Proficy™ Tracker and Order Execution Management

## A better way to manage your manufacturing process and production orders

Tracker and Order Execution Management are two products that help you raise productivity and cut costs by monitoring and managing the execution of your production orders. With Tracker, each serialized and non-serialized item that moves through your production or packaging process can be tracked. You get the detailed, continuous information you need to optimize your manufacturing process, while managing inventory levels and locations, scheduling resources and routing materials much more effectively. Order Execution Management is a product that can be used in conjunction with Tracker to handle the ever-changing real world conditions of your production floor. It provides production order management, broadcast, sequencing, substitution, and hold management of your production orders.

### Business Benefits

The value of any software product is its ability to improve business performance. The Tracker and Order Execution Management products are unique in the industry and offer a solution that manages and adapts to the real time situations that occur on a production floor.

#### Real Time Location and Status of Critical Jobs

Tracker provides the ability to not only track the real time location of jobs on the production floor, but can be configured to perform routing logic on the movement of jobs through the facility. This unique capability allows manufacturers to manage the manufacturing, routing, and delivery of multiple product components into complex product assemblies.

#### Achieving Lean Manufacturing – WIP Reduction, Sequence Realization

The trend in manufacturing today is a shift from build to stock to build to order. This can also be referred to as Lean Manufacturing or build to sequence. Build to Order facilitates a large reduction in Work in Process inventories along with Finished Good inventories, and Order Execution Management provides the ability to manage complex build to order environments.

Sequence Realization is the process of assuring that the correct components for a job are delivered at the right time and in the right order. In many manufacturing operations, suppliers will have to pay a penalty if sequence is not achieved. If the right components are not available, that job will need to be set out of the production line until the right parts arrive. This can then have an impact on all subsequent operations if the situation is not properly managed. Order Execution Management helps manufacturers and their suppliers understand the real time sequence requirements, and more importantly, handle and react to the real world situations that occur on the plant floor when the sequence is broken.

## Tracker

### Manage Your Work in Progress

Tracker works with a variety of production processes, making it easy for you to implement and operate a comprehensive work-in-progress tracking system.

- Collects data from many automated sensors and readers, including bar codes, RF-tags and mechanical tag systems.
- Provides graphic screens to display tracking paths and item information, and reflect production control commands.
- Maintains detailed data for all jobs in the system, including content, status, location and production process counts.
- Keeps cycle counts, repair information and carrier status online. It accommodates different types of carriers within a system, allowing you to track products even when the manufacturing process transforms them.
- Provides routing control of work orders through the production facility.
- Collects and tracks product genealogy information

#### Adaptable for Thousands of Applications

Tracker accommodates a variety of production flow adjustments, from minor modifications to major system redesign. Tracker's automation of tracking and routing can significantly increase the return on your existing equipment by:

- Automatically sending defective materials to a rework area and scrapped materials to a recycling area
- Grouping batches of products to be painted the same color: this improves efficiency, reduces set up and eliminates rework
- Monitoring carriers that are due for adjustment or inspection and automatically routing carriers in need of additional work to a repair center
- Providing line balancing during production startup



# Order Execution Management

## Manage Your Manufacturing Orders

Order Execution Management works in conjunction with Tracker and manages real world events that affect your production orders. Broken into five modules, it provides:

### Plant Order Management

Plant Order Management is responsible for receiving orders from a higher level ordering system and will then adjust them to the plant requirements and capabilities.

### Broadcast Management

Broadcast Management is responsible for receiving a build schedule from a higher level system and sending the build schedule information out to the plant floor to indicate what products need to be built and the sequence they need to be built in.

### Sequence Management

Sequence Management deals with the reality that things will change on your production floor. It provides the ability to manage the build sequence to a pre-established order and helps assure that products are produced in the correct sequence to meet customer orders.

### Substitution Management

Substitution Management works with Sequence Management to handle set-ins and set-outs on the production line. If an order has a particular problem that prevents it from being worked on, that order can be set-out of the production line. Once the issue is resolved, the order can be re-inserted into the production line and the proper sequencing of it will continue.

### Hold Management

Hold Management provides the ability to mark items with reasons why they should not move forward in the manufacturing process. Hold Management is used in conjunction with Sequence and Substitution Management.

# Development and Implementation Support Services

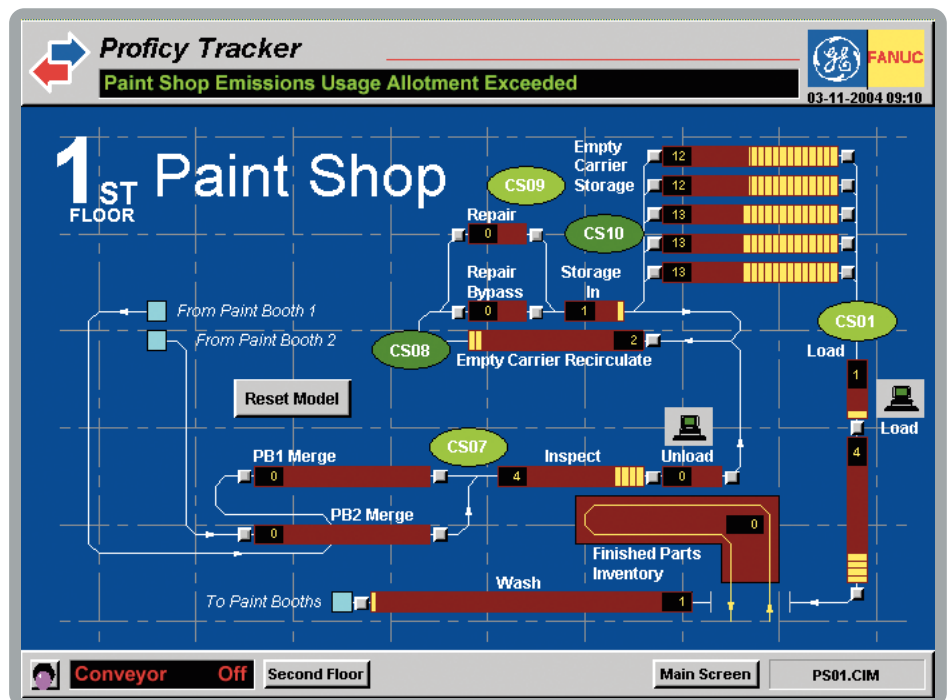
Experienced GE Fanuc engineers can help you develop and implement strategies that apply Tracker and Order Execution Management information to optimize manufacturing flow.

### We can work with you to:

- Define system architectures
- Define, document, and implement the tracking model
- Define and implement new routing scripts
- Perform on-site installation and startup assistance
- Determine the selection and placement of sensor devices
- Provide project and program management

### Tracker lets you:

- Monitor and manage your production flow
- Dynamically collect and store data associated with your product
- Determine the location of all tracked products and display data about each item
- Provide control commands to production equipment to process and route materials
- Support inspection and rework processes, as well as production, assembly and packaging operations



### GE Fanuc Automation Information Centers

Americas:  
1-800-GE FANUC or (434) 978-5100

Europe, Middle East and Africa:  
(352) 26722-1

Europe, Middle East and Africa (CNC):  
(352) 727979-1

Asia Pacific:  
86-21-3222-4555

### Additional Resources

For more information, please visit the GE Fanuc web site at:

[www.gefanuc.com](http://www.gefanuc.com)

